



MONTHLY MEMBERSHIP PROGRESS REPORT

District 201N3

Results as of: 03/31/2019

GMT: ANN ELDRIDGE

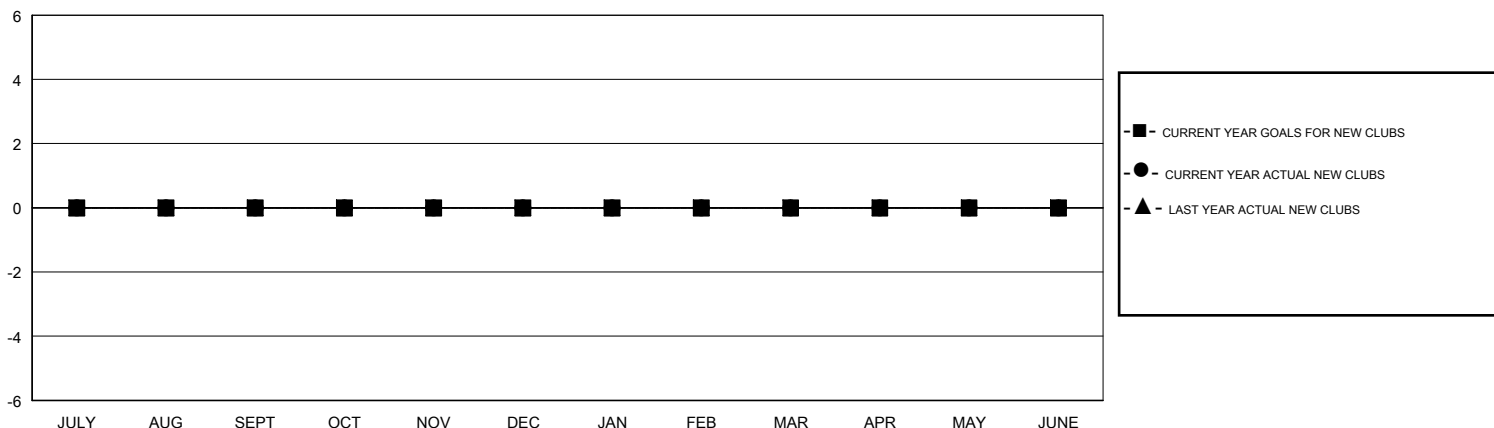
LOCATION AUSTRALIA

GMT CA

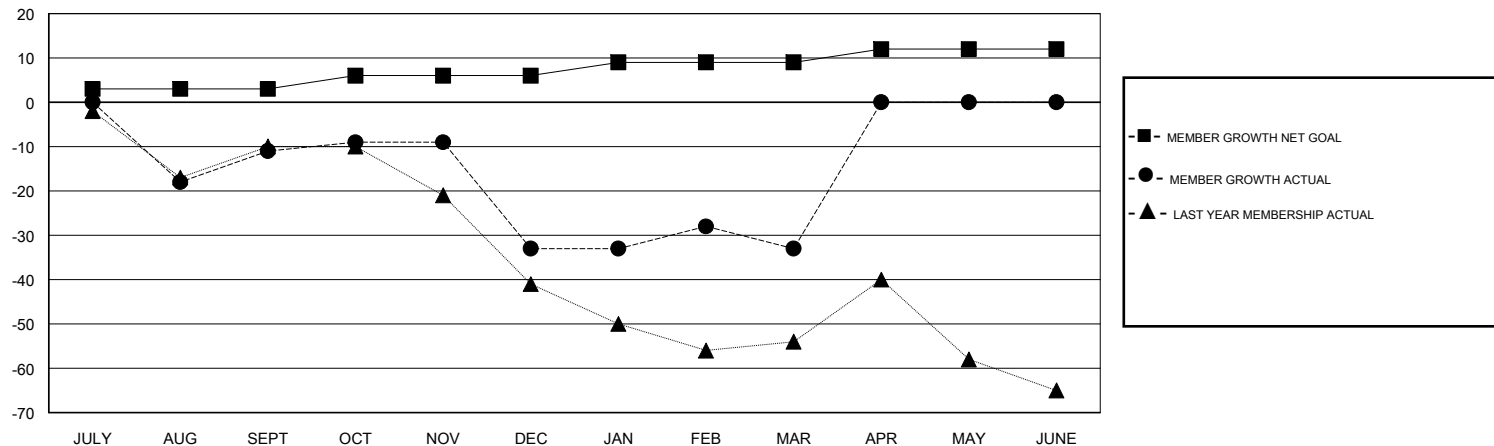
Clubs			
RESULTS FOR 2018-2019			
QUARTER	NEW CLUB GOAL	NEW CLUBS	DROPPED CLUBS
JULY/AUG/SEPT	0	0	1
OCT/NOV/DEC	0	0	0
JAN/FEB/MAR	0	0	0
APR/MAY/JUNE	0	0	0

Members			
RESULTS FOR 2018-2019			
QUARTER	MEMBER GROWTH NET GOAL	MEMBER GROWTH ACTUAL	DROPPED MEMBERS ACTUAL (including transfers)
JULY/AUG/SEPT	3	44	42
OCT/NOV/DEC	3	28	48
JAN/FEB/MAR	3	46	42
APR/MAY/JUNE	3	0	0

GOALS AND ACTUAL NEW CLUBS CUMULATIVE



GOALS AND ACTUAL MEMBERS CUMULATIVE



DROPPED CLUBS: 1	39 CLUBS OF 56 ADDED 1 OR MORE NEW MEMBERS	<u>GENDER DISTRIBUTION</u>	
DROPPED MEMBERS		MALE	718 (61.16%)
DECEASED	14	FEMALE	456 (38.84%)
CLUB CANCELLED	0	Women Percentage Fiscal Year Goal: 39%	
OTHER	118	TOTAL FAMILY UNIT MEMBERS	217
TOTAL	132	FAMILY MEMBERS PAYING HALF DUES	110

[CLICK HERE FOR CUMULATIVE MEMBERSHIP DATA](#)